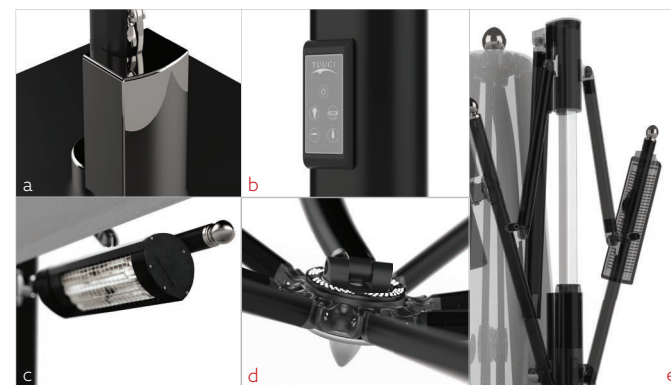


AUTOMATED SINGLE AND DUAL MAX CANTILEVER

TUUCI's Automated Single and Dual MAX Cantilever shade platforms redefine shade technology. Automation and shade integrate seamlessly with our convenient and intuitive push-button interface. Shading, lighting, and heating come alive at your fingertips with a one-touch control panel featuring smart safety protocols. A whole new level of intelligent design has been reached.



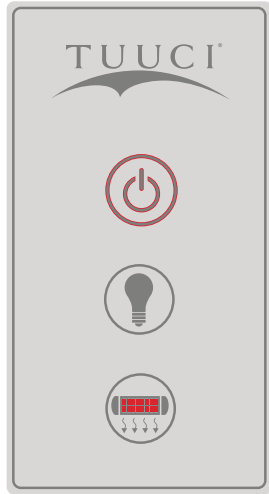
Features:

- a. Control Box
- b. Push Button Control Makes It Easy To:
 - Open and Close the Canopy*
 - Turn On and Off the Luna LED Light*
 - Power Two Energy-Efficient Heaters*
- c. Energy-Efficient Infrared Radiant Heaters
- d. Luna LED Light Provides State-of-the Art Ambient Lighting
- e. Telescoping Mast Provides Ample Tabletop Clearance

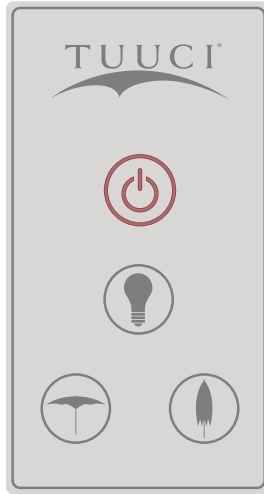
for more information visit tuuci.com

CONFIGURATION OPTIONS

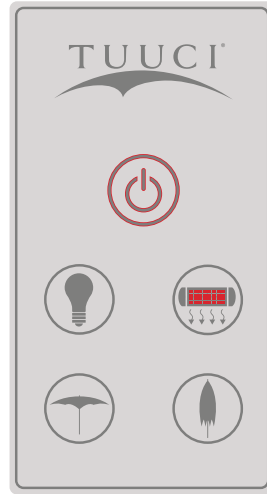
Automation to suit your individual needs. Choose from three pre-set configuration options available for both the Single and Dual MAX Cantilever.



LIGHT AND HEATERS



LIGHT AND AUTOMATION



LIGHT, HEATERS AND
AUTOMATION

SHAPES & SIZES

SINGLE CANTILEVER



Octagon

ft.	/	m.
9.0'	/	2.75
11.0'	/	3.4
13.0'	/	4.0



Square

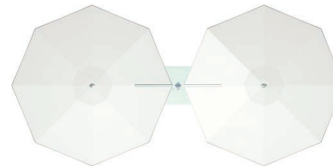
ft.	/	m.
8.0'	/	2.45
10.0'	/	3.0
12.0'	/	3.65
13.0'	/	4.0



Rectangle

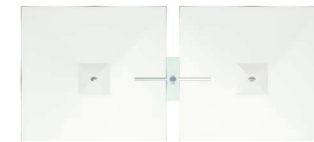
ft.	/	m.
8' x 12'	/	2.45 x 3.65
10' x 14'	/	3.0 x 4.25

DUAL CANTILEVER



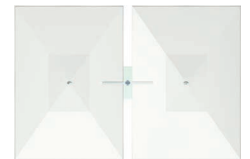
Dual - Octagon

ft.	/	m.
9.0' x 18.0'	/	2.75 x 5.4
11.0' x 22.0'	/	3.4 x 6.8
13.0' x 26.0'	/	4.0 x 8.0



Dual - Square

ft.	/	m.
8.0' x 16.0'	/	2.4 x 4.9
10.0' x 20.0'	/	3.0 x 6.0
12.0' x 24.0'	/	3.65 x 7.4
13' x 26.0	/	4.0 x 7.9



Dual - Rectangle

ft.	/	m.
16' x 12'	/	4.9 x 3.65
20' x 14'	/	6.0 x 4.25

FINISH OPTIONS

ALUMA-TEAK™



natural



java

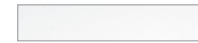


weathered



aspen white

POWDER-COAT



textured bright white



sea shell white



ash grey



jet black



espresso



hammered bronze