

# Aplomb, suspension design Lucidi e Pevere 2010

FOSCARINI



Aplomb is a small suspension lamp that creates direct and precise lighting on an underlying surface. Visible concrete is part of the expressive language of modern architecture and Foscarini, with Aplomb, uses this material with a spirit and a technology that is entirely original. The lamp displays a light touch of extreme elegance and formal simplicity, which softens the massive solidity of the concrete by enhancing its polished and yet unrefined material aspect. The small size of the lamp allows it to be used on its own (for example on a coffee table), in a line to light up a

surface or even as a composition at different heights. It is available in three different colours. The choice of colours, with pigments added directly into the concrete mix, enhances the personality of the lamp in different ways: the natural grey bring out its materiality, the brown gives a touch of warmth, while the white highlights its elegance.

# Aplomb, suspension

## technical info

**FOSCARINI**

### Description

Suspension lamp with direct light. Cement diffuser, consisting off a special amalgam colored with pigments, produced by pouring the fluid mixture into a mould. Internal parabola shaped aluminium diffuser for the halogen version. Ceiling rose with galvanized metal bracket and batch-dyed ABS cover. Black electrical cable and canopy for the brown and grey version, white cable and canopy for the white version. Canopy decentralisation kit - multiple canopy available (up to 9 suspension lamps).

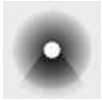
### Materials concrete

Colors white, concrete grey , brown



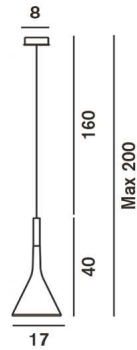
### Brightness light

semi-diffused and direct down light



### Model

#### Aplomb G9



#### Weight

net kg: 1,90  
gross kg: 2,90

#### Packaging

vol. m3: 0,039  
n. boxes: 1

#### Bulbs

Halogen 1x60W G9 or LED retrofit



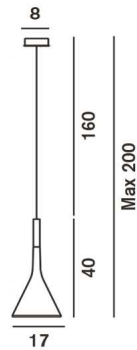
#### Certifications

CE IP 20

#### Energy Class

C A<sup>+</sup>

#### Aplomb GU10



#### Weight

net kg: 1,90  
gross kg: 2,90

#### Packaging

vol. m3: 0,039  
n. boxes: 1

#### Bulbs

LED Retrofit 1x8W GU10 PAR 16 40°



#### Certifications

CE IP 20

#### Energy Class

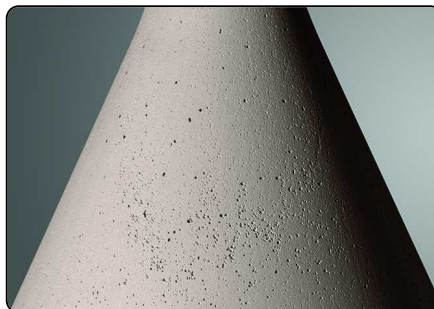
A<sup>+</sup> A

[2D/3D drawings](#)

[photometric info](#)

[assembly instructions](#)

download area



# Aplomb, suspension multiple composition

**FOSCARINI**

## Description

A technical solution that couples function with design harmony: The multiple ceiling flange of Foscarini makes it possible to create compositions up to 9 suspension lamps to create cascades of light of high emotional impact, particularly suitable to enrich a stair case. The standard multiple flange is designed to suit a large number of suspensions from both Foscarini and Diesel with Foscarini collections.

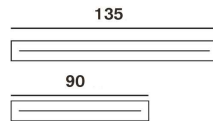
## Materials

Lacquered metal

## Colors

White

## Multiple canopy



## Weight

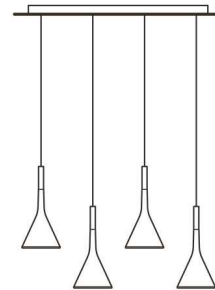
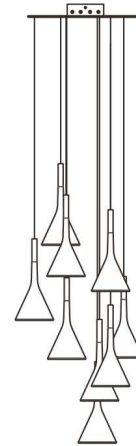
net kg: 9,00

gross kg: 10,70

## Packaging

vol. m3: 0,038

n. boxes: 1



# Aplomb, suspension designer+collection

FOSCARINI

## Lucidi e Pevere

Paolo Lucidi and Luca Pevere got together at well-known design offices in Milan. In 2002 they signed their first commissions together and, in 2006, establish Studio Lucidi & Pevere in Milan. These days, Studio Lucidi & Pevere is based in Udine and still undertakes industrial design work for internationally renowned companies, belonging to a large number of different sectors.

Watch the video Aplomb



Go to concept site for Aplomb  
[www.foscarini.com/aplomb](http://www.foscarini.com/aplomb)



## Aplomb Collection



floor



suspension



wall