

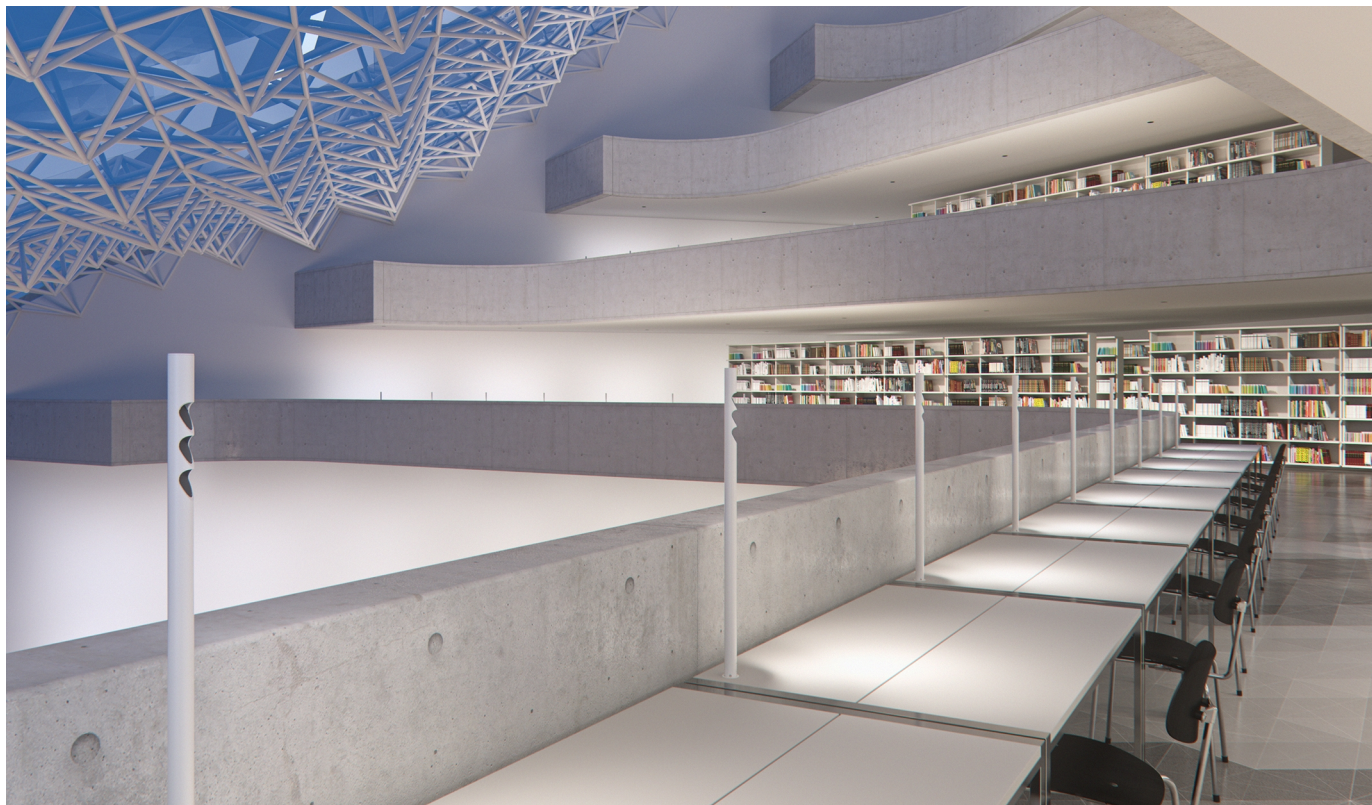


A new model for digital working light

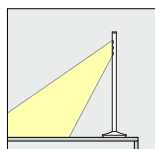
Innovative design for productive working

Light for thinking, light for concentrated working, light for creative concepts – with Lucy ERCO delivers professional LED lighting technology to any workplace, such as libraries, offices or the home. The minimised solution with the stylish design ensures flexible deployment and intuitive operation. For permanent installation at workplaces in public buildings, the luminaire can be mounted flush with the desktop. As with its pedestal coun-

terpart, the luminaire head can be rotated by 180° and adjusted individually. The integral optical system is protected inside the luminaire, thereby guaranteeing glare-free light with high visual comfort. Operated with an on/off dimmer switch, Lucy can be dimmed down continuously to 1%.



Workplace lighting
Workplace lighting with asymmetrical light distribution.



Task lights
Asymmetrical light distribution for workplace focused desk illumination.

LED module
10W
930lm - 1230lm

Structure and characteristics

The features described here are typical of products in this range. Special versions may offer additional or varying features. A comprehensive description of the features of individual products can be found on our website. The direct links for quick access always take the same form:

www.erco.com/<article number>

Detailed information on the features is provided in the Program from page 453.



1 ERCO LED module

- High-power LEDs on metal-core PCB
- Light colours: warm white or neutral white

2 ERCO optical system

- Reflector: polymer, aluminium vaporised, mirror-finish
- Softec lens
- Anti-glare element: polymer, black

3 Luminaire

- White (RAL9002)
- Aluminium profile, powder-coated
- 180° rotation
- Push-button with integrated dimmer

4 Control gear

- Dimmable

5 Pedestal

- Cast aluminium, powder-coated
- Base, non-slip polymer, anthracite

or

Desk fixing

- Installation bush, brass, powder-coated, for desk thicknesses of 10-40mm
- Screw fixing

6 Power adapter

Special characteristics



Excellent visual comfort



ERCO high-power LEDs



Different light colours



Excellent thermal management



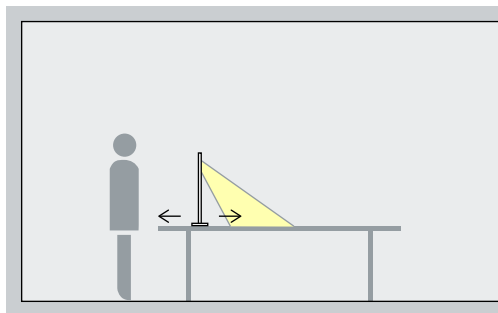
EMC-optimised



Dimmable

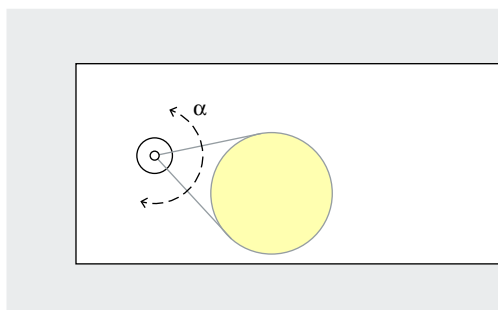
Lucy Task lights – Luminaire arrangement

Task lights



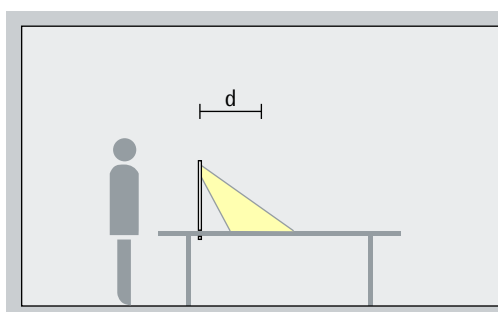
Workplace lighting

Lucy task lights with a pedestal can be positioned anywhere in the room. For optimum illumination of the desktop, the luminaire should be placed on the left side for right-handers and on the right for left-handers.



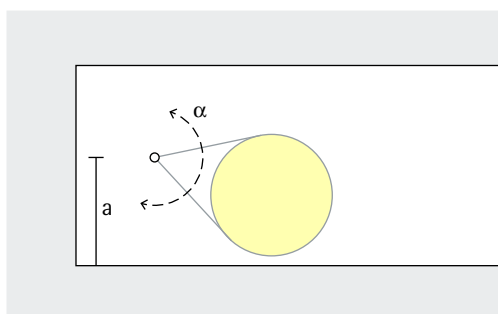
From a single position, the illuminated surface can be adjusted to the area of the visual task thanks to a luminaire head that can be rotated by 180° (α).

Arrangement: $\alpha = 180^\circ$



The position of Lucy task lights for desktop mounting depends on the surface to be illuminated. For optimum illumination of the desktop, the luminaire should be placed on the left side for right-handers and on the right for left-handers. The recommended mounting point is around 40-50cm (a) from the edge of the desk, with a distance (d) of around 50cm to the centre of the beam.

Arrangement: a = 40-50cm and d = 50cm



From a single position, the illuminated surface can be adjusted to the area of the visual task thanks to a luminaire head that can be rotated by 180° (α).

Arrangement: $\alpha = 180^\circ$