

## PRODUCT SHEET

— CANDLE TORCH — Candle holder —

ANDREAS ENGESVIK

—

PETITE FRITURE

## ANDREAS ENGESVIK



Andreas Engesvik, Norwegian, born in 1970, has a Bachelor's degree in Art History from the University of Bergen Norway (1991/1995). Andreas went on to study Design at the National College of Art and Design. He graduated in 2000 with a Master's degree in Design and founded in the same year Norway Says. In 2009 Andreas Engesvik went solo and founded his new studio ANDREAS ENGESVIK, OSLO. His studio is working in various fields of design ranging from furniture and tableware to industrial design for various international clients such as Iittala, Muuto, Fontana Arte, Ligne Roset and Asplund. Andreas Engesvik was in 2012 appointed as Guest Professor at The University College of Arts, Crafts and Design (Konstfack) in Stockholm.

*« My philosophy is founded on a Scandinavian approach towards the understanding of objects, materials and function. »*

**CANDLE TORCH**  
**CANDLE HOLDER**  
ANDREAS ENGESVIK

Edition : 2013

---



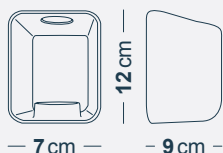
**CANDLE TORCH...**  
**ACCORDING TO ITS DESIGNER :**

*« CANDLE TORCH is a functional candle holder with a touch of magic. Due to its form the light is powerful and direct – almost like that of a torch; and the flame is protected for drafts of air. CANDLE TORCH works as well as a light for outside, as well as a desk lamp on a table, in the kitchen or in the bathroom. »*

CANDLE TORCH by Andreas Engesvik is an enamelled ceramic lantern that can be used both indoors and out. The simple form protects the flame and reflects a light both powerful and directional that promotes its presence. CANDLE TORCH exists in three colours (white, grey and coral) and two models, the small for tea lights and the large for standard candles.

## DIMENSIONS &amp; WEIGHTS

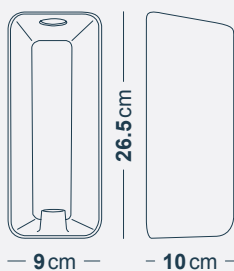
## SMALL



L: 7 cm; W: 9 cm; H: 11 cm  
W: 0.25 kg

Packaging: 15x13.5x17.5 cm

## LARGE



L: 9 cm; W: 10 cm; H: 26.5 cm  
W: 0.35 kg

Packaging: 17.5x15.5x33.5 cm

TECHNICAL  
SPECIFICATIONS

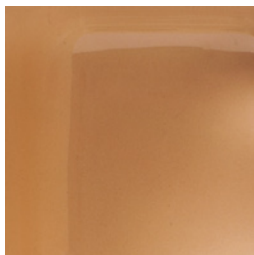
• Environment: indoor

• Tealight for the small model  
and standard candle (Ø 21 mm)  
for the big one

• Made in Europe  
(Portugal)

## COLOURS &amp; MATERIALS

## • Ceramic



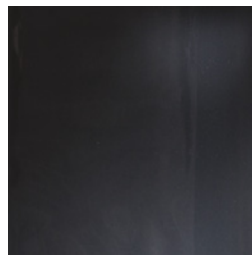
CORAL

REF.

**SMALL** - D0320101  
**LARGE** - D0320201

WHITE

REF.

**SMALL** - D0320102  
**LARGE** - D0320202

GREY

REF.

**SMALL** - D0320103  
**LARGE** - D0320203

---

· | **CONTACT** | ·

---

**PETITE FRITURE**

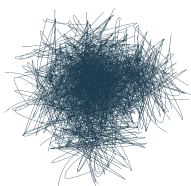
**Showroom**

83 boulevard Richard Lenoir, 75011 - Paris

T +33 (0)1 44 54 13 95

F +33 (0)1 44 54 02 19

**[petitefriture.com](http://petitefriture.com)**



**PETITE  
FRITURE**  
ÉDITEUR DE DESIGN