

MAYOR

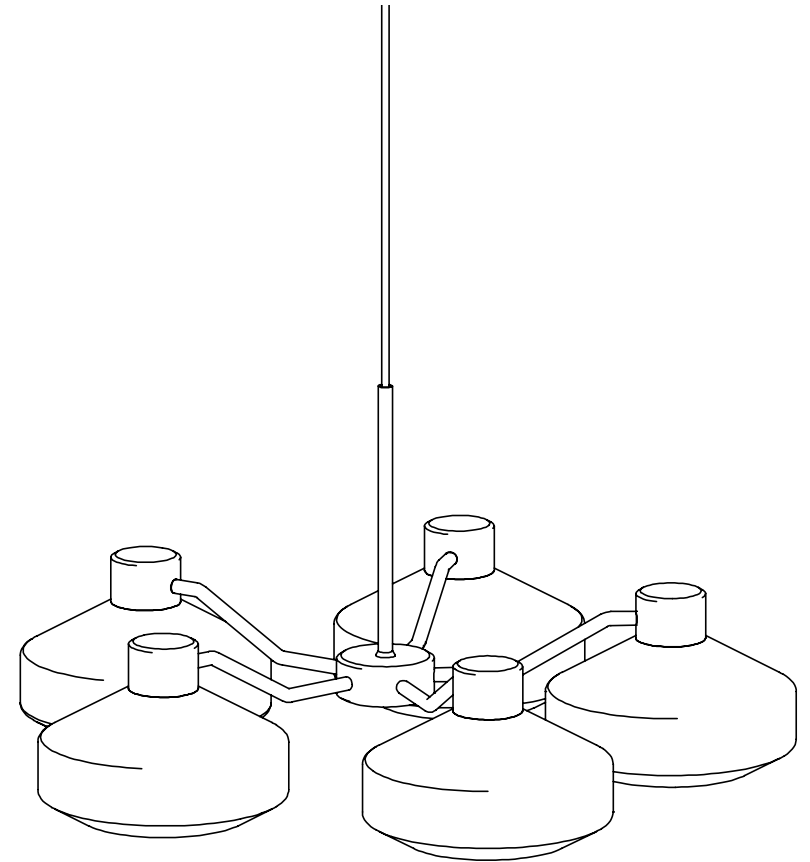
DESIGN BY
FRANDSEN DESIGN STUDIO

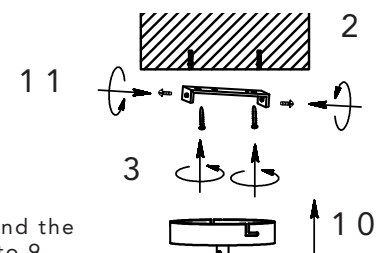
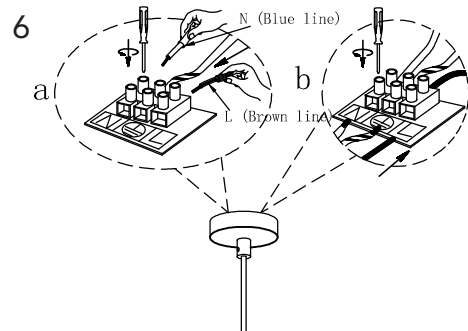
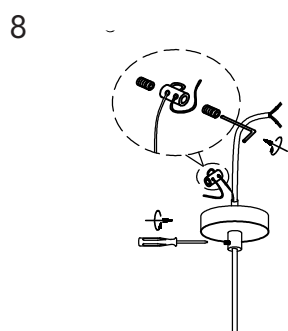
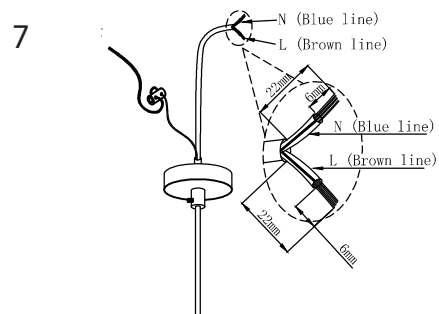
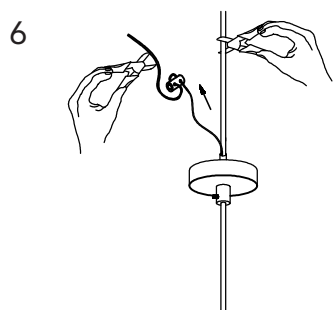
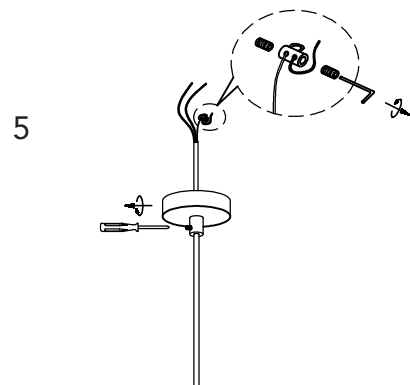
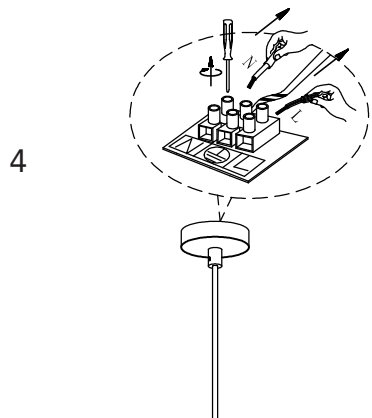
Frandsen has been designing,
producing and marketing lamps
since 1968

*"It is important for us to design
lamps in beautiful materials, and
to make sure that our products
are signalling quality and taste"*

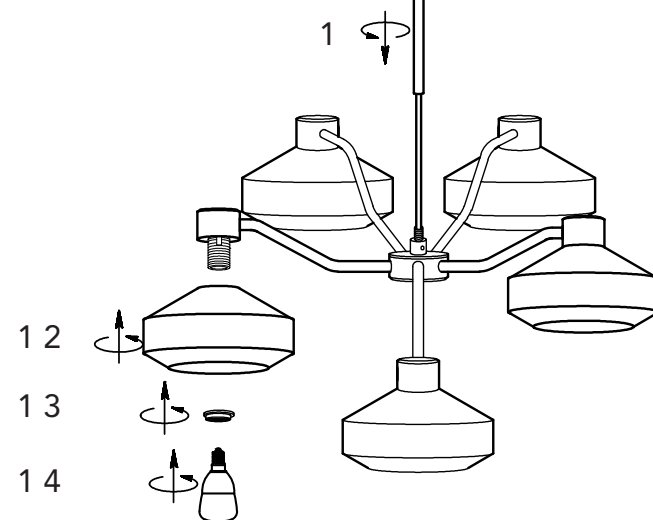
FRANDSEN

WWW.FRANDSEN.COM





To shorten the wire and the cable follow steps 4 to 9.
To mount the lamp without shortening wire and cable go to step 9b.



If the external flexible cable or cord of this luminaire is damaged, it shall be exclusively replaced by the manufacturer or his service agent or a similar qualified person in order to avoid a hazard.