



CARE INSTRUCTIONS

FRAME/GLASS/LAMINATE

For dusting and light cleaning use a soft, dry cloth. For further cleaning, use a soft cloth that is firmly wrung in clean water for gently wiping the surface, and then immediately use a dry cloth to wipe the surface again. If more thorough cleaning is necessary, use a mild liquid soap dissolved in water on a firmly wrung cloth to wipe the frame. Afterwards, repeat the process with clean water as described above

MARBLE

For marble maintenance, see the included marble instruction sheet.

WOOD

For dusting and light cleaning use a clean dry cloth, or a cloth hardly wrung in clean water. Dirty surfaces are cleaned with a hardly wrung cloth out of soapy water or in water with added mild liquid soap. Wipe after with a clean dry cloth.



For enquiries contact GUBI A/S - CVR: 17940384
Klubiensvej 7-9. 2150 Nordhavn. Copenhagen, Denmark
T +45 69 15 60 60 – salesupport@gubi.dk
GUBI.COM

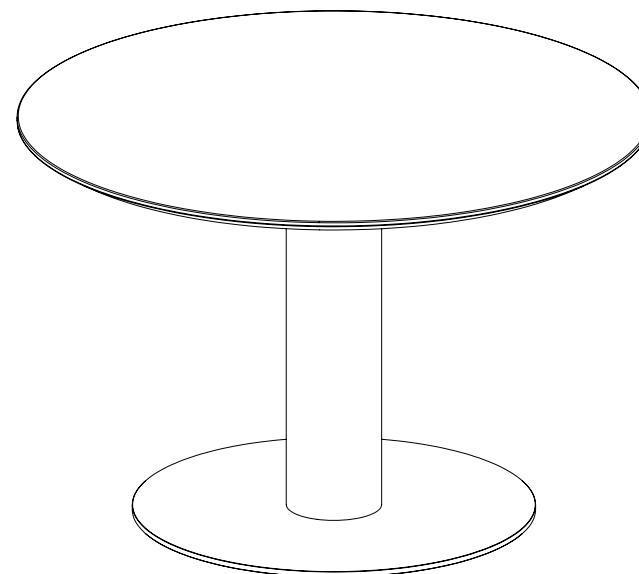
07-20-200-05 Mounting Instructions Gubi Table 2.0.

GUBI

ASSEMBLY INSTRUCTIONS

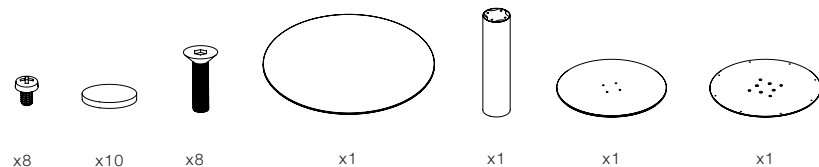
for

GUBI TABLE 2.0

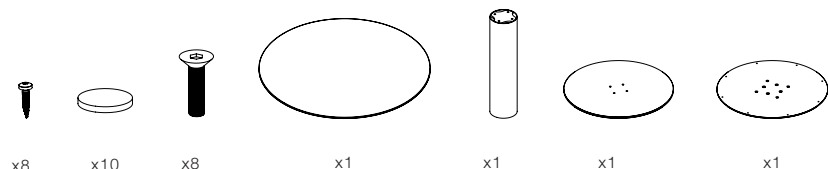


CONTENTS (MARBLE)

GUBI TABLE 2.0

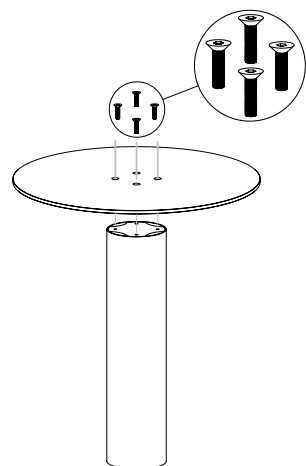


CONTENTS (WOOD/LAMINATE/GLASS)



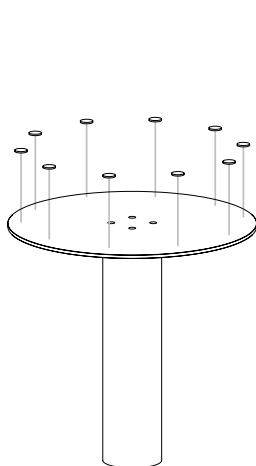
1.

Use four of the countersunk screws to screw together the base plate and the column.



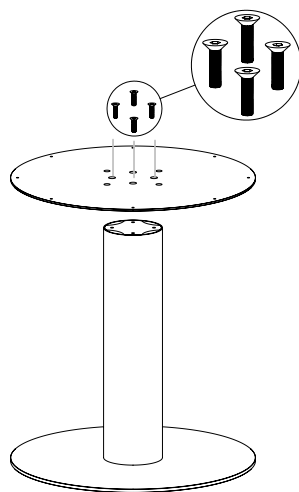
2.

Peel the paper off and stick the felt glides evenly around the edge of the bottom of the base plate. For the best visual result - keep a distance of over 1,5 cm to the edge.



3.

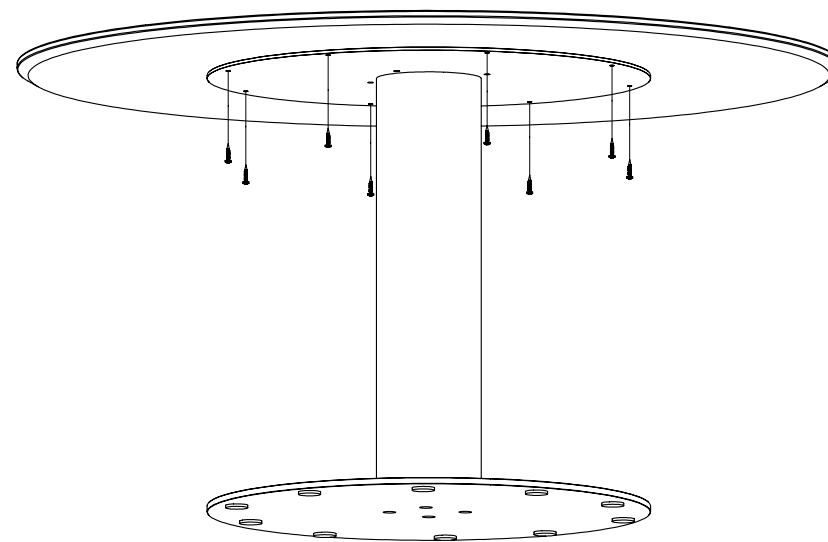
Place the top piece on the column and screw them together with four countersunk screws.



4.

Marble: Align the frame with the threaded holes in the table top. Mount with 8x machine screws.

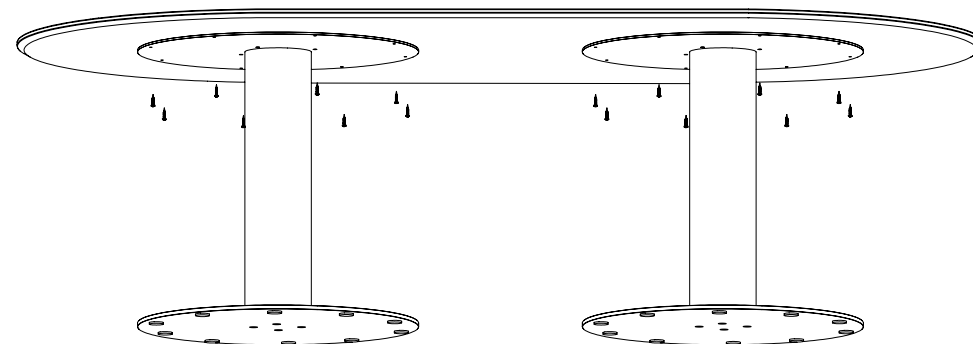
Wood, laminate and glass: Align the frame with the predrilled holes in the marble table top. Holes may be hidden under felt covering. Mount with 8x wood screws.



Two Column

Marble: Use the 16x machine screws. Align the frame with the threaded holes in the table top.

Wood, laminate and glass: Use the 16x wood screws. Align the frame with the predrilled holes in the marble table top. Holes may be hidden under felt covering.



CAUTION: DO NOT LIFT TABLE BY TOP!

DO NOT lift the table only by the table top. When moving the table, dismount the screws in the table top. Remove the table top from the frame. Move the frame and put the table top back on.