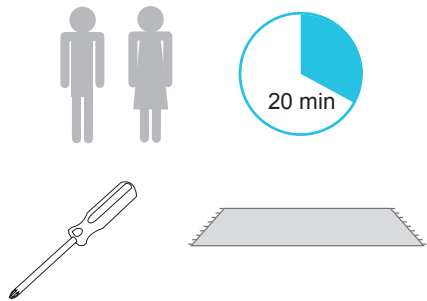


How to assemble ON A STRING

You need



You've got

1 x Table Top



2 x Legs



2 x Cleat



4 x Screw



2 x Strings



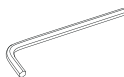
2 x String Adjuster



8 x Allen Screw



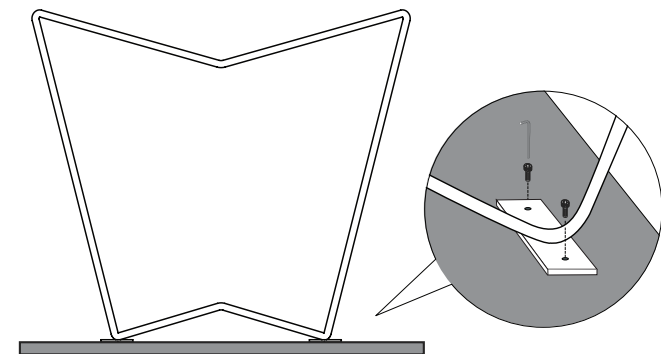
1 x Allen Key



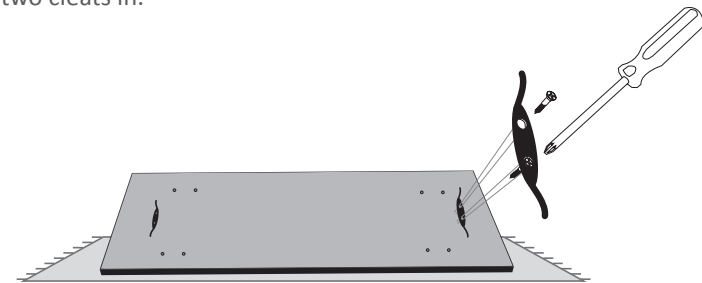
How to assemble

Start by placing the table upside down on a soft material to avoid scratching the surface.

Mount the legs by using the screws and the Allen key

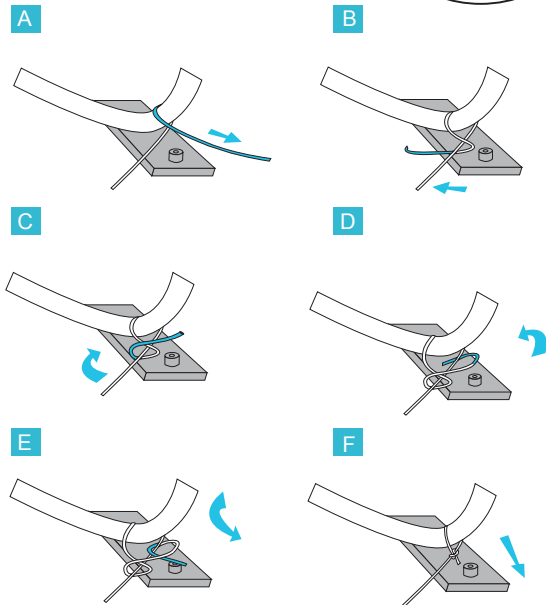
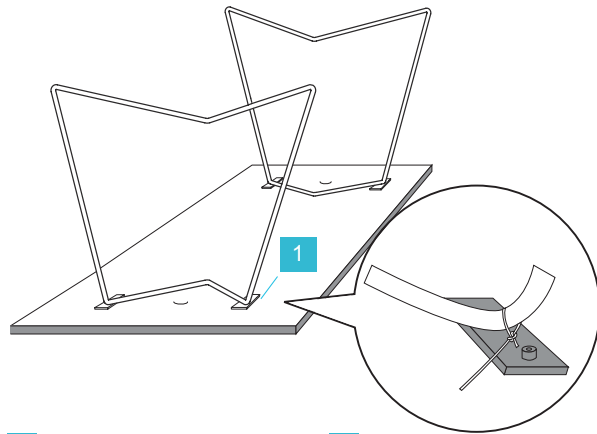


Screw in the two cleats in.

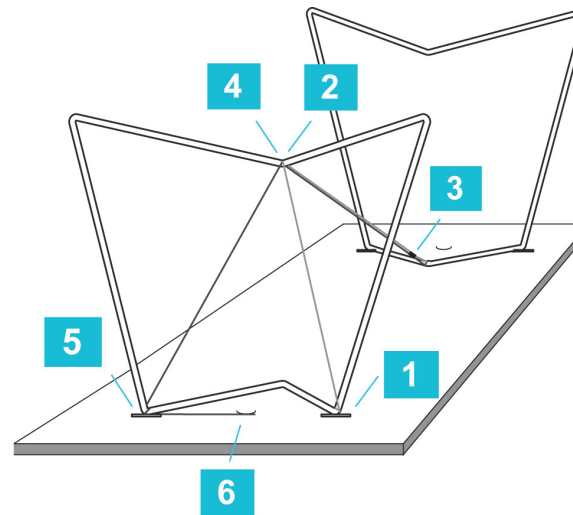


The knot

Using **1** as a starting point. Make the knot as illustrated below.

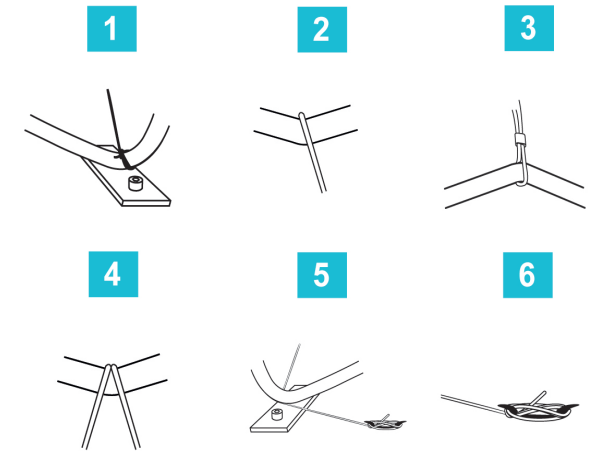


Tie the table



- 1** The knot.
- 2** Guide the string around the first leg.
- 3** Apply the string adjuster to the string before looping it around the second leg. When leading the string back, pull it through the string adjuster again.
- 4** Now you can take it back over the first leg again.
- 5** Maneuver the string around the leg mount.
- 6** Tighten the string and then fasten it on the cleat.

Repeat the steps for the 2nd string on the opposite side.



To minimize movement in the table additional tightening of the string can be required. You can easily tighten the strings while the table is in the upright position.

If the two strings are not tightened equally, the table might not be level.

For a clean tight look place the string adjusters as close to the legs as possible.

On our website you will furthermore find an instructional video of how to assemble the On a String table and also a maintenance guide.

Voilà; your table is ready!



Maintenance of linoleum surfaces

- Linoleum is a 100 % natural product made from plants and trees.
- It is environmentally friendly
- Does not get greasy finger marks
- It is sound reducing
- Anti static
- And Easy to clean

General maintenance:

Wipe with a clean dry cloth or a cloth wrung out in clean water and wipe off immediately with a clean dry cloth. Wipe soiled surfaces with a cloth wrung out in soap solution (natural soap is recommended) or with a cleaning agent especially made for cleaning linoleum. Wipe the surface dry immediately using a clean dry cloth. Stains can usually be removed by carefully wiping with white spirit. Caution – fire risk! Provide ventilation!

Thorough cleaning:

If a linoleum surface is very dirty, clean it with linoleum cleaner and linoleum maintenance treatment agents. Always follow the instructions. Linoleum is a living material which will, if treated correctly, restore its surface. Therefore most stains and small damages will disappear by itself in time.

How to prevent damages and remove stains:

- Linoleum is manufactured from oxidized linseed oil mixed with fillings and dyes. To maintain the appearance and performance of linoleum, never apply oil or lacquer.
- Take precaution when using sharp and pointy items, use a table mat.
- Remove stains and spills immediately.
 - Aggressive cleaning agents such as strong cleaners, soft soap and washing-up liquid should never be used.
- Do not place hot items directly on to the surface (max 80 degrees Celsius).
- To preserve the colors of the materials they should as far as possible be protected from direct sunlight. It is recommended that surfaces should not be partly covered, for example by tablecloths etc.

Maintenance of laminated surfaces



General maintenance:

Wipe with a cloth wrung out in hot water with washing-up liquid.
Soap flakes are not suitable because they leave a film on the surface.

Thorough cleaning:

Laminated surfaces can be cleaned with a cloth moistened with methylated spirits.

- Do not place hot items directly on to the surface (max 80 degrees Celsius).

NOTE: once assembled, the strings can be re-tightened to keep the table top straight.



- Linoleum er et 100 % naturprodukt, fremstillet af råvarer udvundet af planter og træer.
- Det er naturligt og miljøvenligt.
- Det er ikke modtageligt overfor fedtede fingre.
- Det er støjdæmpende.
- Antistatisk (binder ikke støv og snavs)
- Rengøringsvenligt

Almindelig rengøring:

Aftørring med en ren, tør klud eller en klud hårdt opvredet i rent vand. Der skal tørres efter straks med en ren, tør klud. Snavsede overflader renses med en klud hårdt opvredet i sæbevand (natursæbe anbefales) eller med et rensmiddel specielt beregnet til linoleum. Overfladen eftertørres straks med en ren, tør klud.

Pletter kan forsøges fjernet ved en forsigtig anvendelse af mineralsk terpentin. Brandfare! Sørg for udluftning!

Grundig rengøring:

Meget snavsede linoleumsoverflader kan renses ved anvendelse af rengørings- og vedligeholdelsesmidler specielt beregnet til linoleum. Følg altid brugsanvisningen.

Linoleum er et levende materiale derfor vil det, hvis behandlet korrekt, genoprette sin overflade med tiden. Således vil de fleste pletter og mærker forsvinde af sig selv.

Sådan forebygges og fjernes pletter:

- Linoleum er et produkt fremstillet af oxyderet linolie blandet med fyld- og farvestoffer. Skal man have glæde af linoleums udseende og andre gode egenskaber, bør det ikke påføres olie eller lak.
- Skarpe og spidse ting kan give ridser i overfladen. Brug derfor underlag, hvis du er i tvivl.
- Fjern pletter og spildte væsker straks.
- Skrappe rengøringsmidler så som grundrens, brun sæbe og opvaskemiddel må aldrig anvendes da det udtørre linoleum.
- Sæt ikke varme ting direkte på linoleumsbordpladen (max 80 degrees celsius).
- For at bevare materialernes farve bør direkte sollys så vidt muligt undgås. Det anbefales, at møbeloverflader ikke tildækkes delvist, fx af duge etc.



Almindelig rengøring:

Foretages ved aftørring med en klud hårdt opvredet i varmt vand tilsat flydende opvaske-middel.

Sæbespån er ikke velegnede, da de efterlader en hinde på overfladen.

Grundig rengøring:

Laminat overflader kan rengøres med en klud fugtet med denatureret sprit.

- Sæt ikke varme ting direkte på linoleumsbordpladen (max 80 grader).

Bemærk: Snoretrækket kan strammes yderligere med tiden således at bordet forbliver stramt og lige.