

Data sheet Product

design Yamada

iGuzzini

June 2008

Double cone



Product code:

5633

Technical description:

Outdoor wall luminaire made of aluminium. A protection glass is located both in the upper and the lower section of the optical assembly. This system creates a 46° light cone in the upper section of the wall and an 84° light cone in the lower section. Die cast aluminium plate for wall fixing with a hole protected with plastic material for the wiring. The body of the fitting is fixed to the plate with a screw, allowing for easy lamp replacement.

Installation:

Fixed to the wall with fischer screws.

Dimension:

205x150mm H 165mm

Color:

White (01) or Grey (15) or Black (04)

Weight

2.3 Kg

Light Source:

Type:	QT-DE12	Socket:	Rx7s
Wattage:	150 Watt	Voltage:	230 Volt
Luminous flux:	2400 Lm	Efficiency:	17 Lm/W
Color temperature:	3000 K	IRC:	100 Ra
Last:	2000 h		

Wiring:

Terminal board on the fixing plate.

Technical Characteristics:

Protection Degree:	IP 44	Complies with EN605981 and pertinent regulations
Insulation Class:	Class I	Complies with EN605981 and pertinent regulations
Resistance:	960°C	

Quality seal:



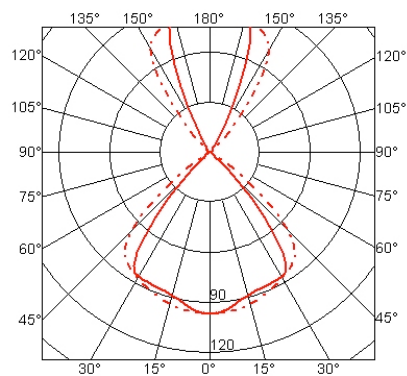
IMQ



European unified seal

Notes:

/



Photometric Data

iGuzzini

June 2008

Double cone

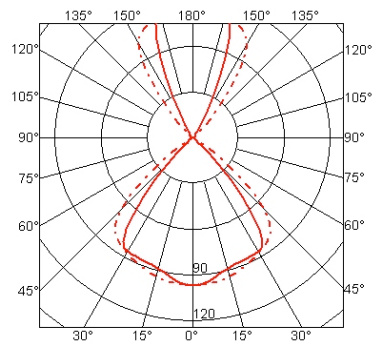


Product code:

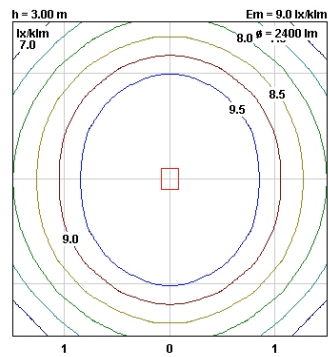
5633

Version QT-DE12 150W

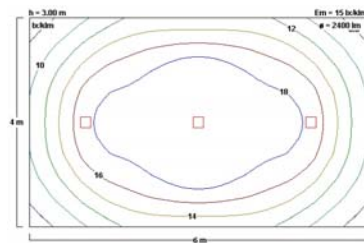
polar curve



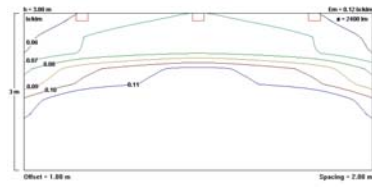
isolux (single)



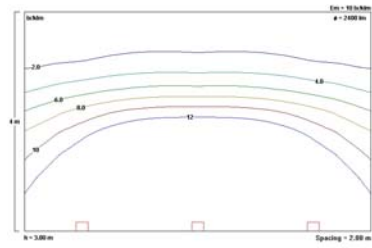
isolux (pattern)



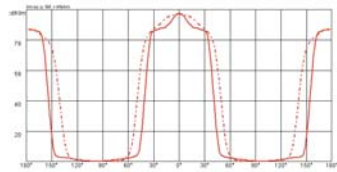
isolux wallwasher



isolux (steplight)



cartesian diagram



Application setting sheets

iGuzzini

June 2008

Double cone

- Private house - Barcelona

Photographer : José Hevia Blanch



Application setting sheets

iGuzzini

June 2008

Double cone - Calem's wine cellar - Oporto

Photographer : Manuel Vicente



Application setting sheets

iGuzzini

June 2008

Double cone

- Europe Square - Osimo (Italy)

Photographer : Giuseppe Saluzzi

