

Data sheet Product

design Yamada

iGuzzini

June 2008

Blade upwards cone downwards



Product code:

5632

Technical description:

Outdoor wall luminaire made of aluminium. The optic system features a biconvex glass lens in the upper section of the optical assembly and a protection glass in the lower section. This system creates "vertical blades of light" in the upper section of the wall and an 84° light cone in the lower section. Die cast aluminium plate for wall fixing with a hole protected with plastic material for the wiring. The body of the fitting is fixed to the plate with a screw, allowing for easy lamp replacement.

Installation:

Fixed to the wall with fischer screws.

Dimension:

205x150mm H 170mm

Color:

White (01) or Grey (15) or Black (04)

Weight

2.4 Kg

Light Source:

Type:	QT-DE12	Socket:	Rx7s
Wattage:	150 Watt	Voltage:	230 Volt
Luminous flux:	2400 Lm	Efficiency:	17 Lm/W
Color temperature:	3000 K	IRC:	100 Ra
Last:	2000 h		

Wiring:

Terminal board on the fixing plate.

Technical Characteristics:

Protection Degree:	IP 44	Complies with EN605981 and pertinent regulations
Insulation Class:	Class I	Complies with EN605981 and pertinent regulations
Resistance:	960°C	

Quality seal:



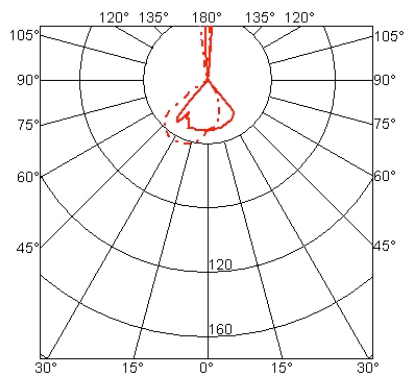
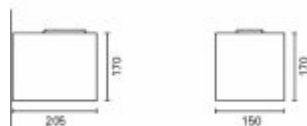
IMQ



European unified seal

Notes:

/



Photometric Data

iGuzzini

June 2008

Blade upwards cone downwards

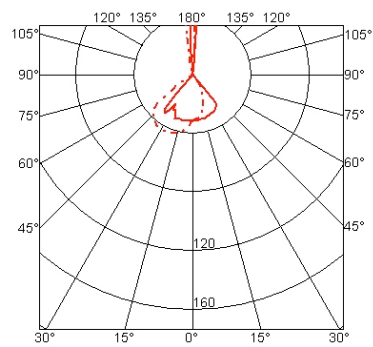


Product code:

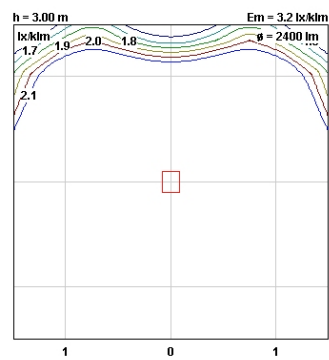
5632

Version QT-DE12 150W

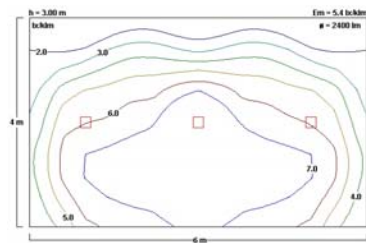
polar curve



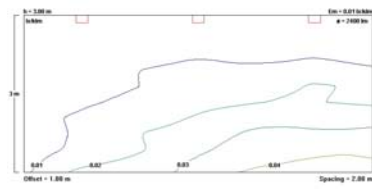
isolux (single)



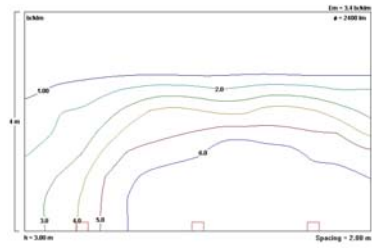
isolux (pattern)



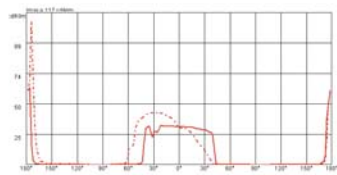
isolux wallwasher



isolux (steplight)



cartesian diagram



Application setting sheets

iGuzzini

June 2008

Blade upwards cone downwards- Multisala VIS PATHE¹ - Firenze, Italia

Photographer : Giuseppe Saluzzi

